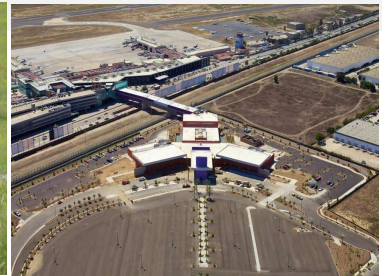




BARANEK
Consulting Group



ENVIRONMENTAL PLANNING + MANAGEMENT SERVICES



ABOUT US

Baranek Consulting Group, Inc. (BCG) was established in 2013 as a woman-owned environmental consulting firm that specializes in preparing environmental review documentation pursuant to CEQA and NEPA:

- EIRs and EISs
- Mitigated Negative Declarations
- Initial Studies and Checklists
- Environmental Assessments
- Addendums

Professional services:

- Entitlement processing
- Program and project management
- Technical studies oversight
- Mitigation monitoring compliance

RECENT PROJECT EXPERIENCE

- 2020** 4th Corner Affordable Housing Project EIR (Wakeland Housing)
Otay Truck Park Addendum to FEIR (Richfield Corporation)
All People's Church MND (All People's Church)
Mount Etna Affordable Housing Community Plan Amendment/Rezone EIR (County of San Diego)
Sam Yellen Community Park Mitigated Negative Declaration (City of Palmdale)
- 2019** UC San Diego Long Range Development Plan EIR, Technical Studies, Public Outreach (UC San Diego)
Veteran Affairs Hospital Annex CUP MND (Protea Properties)
Aviara Apartments EIR (City of Carlsbad)
- 2018** Balboa Avenue Station Area Specific Plan EIR (City of San Diego)
Candlelight Residential TM/PDP/SDP EIR (Abrams Family)
- 2017** Merge 56 Development Project/Circulation Element Roads EIR (Seabreeze Properties)
Southview East Residential Development Addendum (Cornerstone Communities)
- 2016** University of San Diego Master Plan Update EIR (USD)

CERTIFICATIONS

- SANDAG Planning/A&E Bench
- County Approved EIR Preparer
- City of San Diego ELBE #14BC1039
- CA DGS SB (Micro)/SB-PW 2005821
- CPUC WBE 14010115
- MWD SBE
- SDCWA SBE

PUBLIC AGENCIES

- Caltrans, District 11
- City of Carlsbad
- City of Chula Vista
- City of Encinitas
- City of Escondido
- City of Imperial Beach
- City of Oceanside
- City of San Diego
- City of Santee
- County of San Diego
- City of Hesperia
- County of Los Angeles
- Metropolitan Water District of Southern California
- Grossmont-Cuyamaca Community College District
- San Diego State University
- CSU, San Marcos
- UC San Diego
- UC Santa Barbara

(858) 922-8604 | Kim@baranekconsulting.com